

# Grand Canyon

U.S. Department of the Interior  
National Park Service

Grand Canyon National Park



*"The Colorado River Management Plan is primarily a visitor use management plan that specifies actions to conserve park resources and visitor experience while enhancing recreational opportunities on the Colorado River through Grand Canyon National Park"*

**Grand Canyon River Guides Training Seminar, March 2011**

# Grand Canyon

U.S. Department of the Interior  
National Park Service

Grand Canyon National Park



**Education and Outreach** (understanding, ownership)

*Being part of the solution*

**Visitor Experience Monitoring**

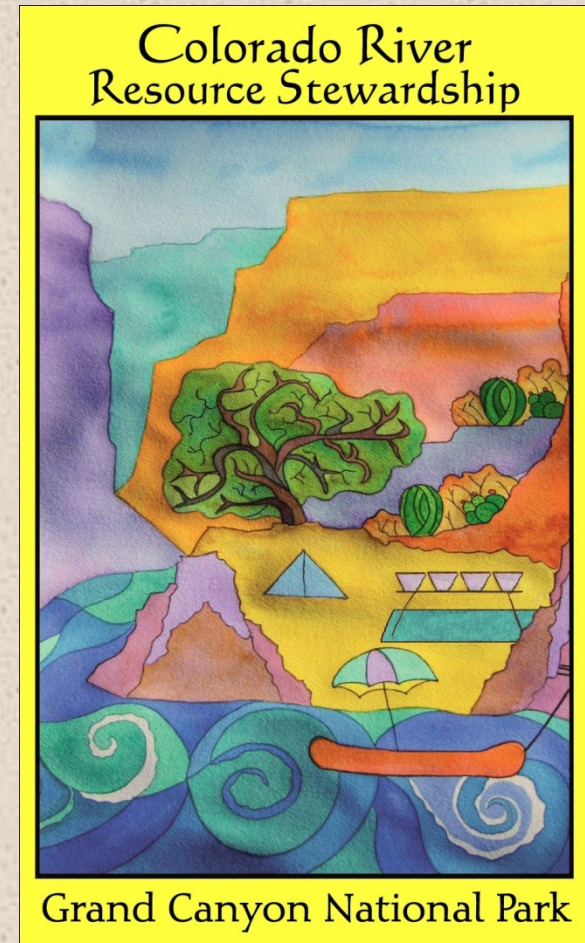
*Are we meeting our responsibility to provide the public with a quality recreational experience?*

**Long-term Monitoring** (taking the pulse)

*Looking for trends in Resource Conditions*

**Management Action/Mitigation**

*Site Specific treatments: trails, camps, vegetation, archeological sites*





**The Action Guide to Preservation  
Colorado River, Grand Canyon National Park**

**Produced in cooperation with Bilby Research  
Center of NAU**

**Edited by Joelle Clark; graphic designers are  
working on the final layout.**

**Final review will be completed early April**

# Grand Canyon

U.S. Department of the Interior  
National Park Service

Grand Canyon National Park



## Visitor Experience Monitoring

Attraction Site Observations

Administrative Trip Logs

Post-trip online questionnaire





## Visitor Experience Monitoring

- Crowding vs solitude (PAOT/TAOT)
- Campsite occupancy & competition
- Trip type, size, length
- User discretionary time

# Grand Canyon

U.S. Department of the Interior  
National Park Service

Grand Canyon National Park



## Observations at LCR, Elve's, Deer Creek, and Havasu

- PAOT and TAOT peak between  
10 AM and 3 PM
- Number of PAOT rarely  
exceeds 100 (*typically dispersed,  
not concentrated*)



# Grand Canyon

U.S. Department of the Interior  
National Park Service

Grand Canyon National Park



## 2011 Visitor Experience Monitoring

May  
LCR, Phantom  
Deer Creek



April - September  
Lower Gorge

# Grand Canyon

U.S. Department of the Interior  
National Park Service

Grand Canyon National Park



## Administrative Trip Logs

- River patrol trips, research trips, GCY
- Top 5 camps: Soap, Saddle, Nankoweap, Cardenas, and Bass
- Top 5 lunch spots: Below Lava, Boat Beach, Grapevine, Granite, Redwall Cavern





# Grand Canyon

U.S. Department of the Interior  
National Park Service

Grand Canyon National Park



## Top 5 Attraction Sites

- Deer Creek
- Havasu Creek
- Matkatamiba
- LCR
- Clear Creek



## Integrated Resources Monitoring

- Began in 2007. Spring and Fall
- Camps on the monitoring plan are representative of size, reach and use frequency.
- 33% of river camps represented
- ~40 sites per trip monitored
- Vegetation, avifauna, campsites, archaeological sites

# Grand Canyon

U.S. Department of the Interior  
National Park Service

Grand Canyon National Park



EXPERIENCE  
YOUR  
AMERICA

- Protocols are being and converted to SCPN I&M standard format
- Data for each discipline being combined into a single database
- Seeking a statistician to perform the analysis
- 2010 annual report will be completed by September 2011
- Look for the 4 year synthesis report next summer

# Grand Canyon

U.S. Department of the Interior  
National Park Service

Grand Canyon National Park



## Lower Gorge February CRMP Mitigation Trip

Address resource impacts at river campsites  
between Diamond and Pearce.

Historic Archaeological Site Inventory and Monitoring

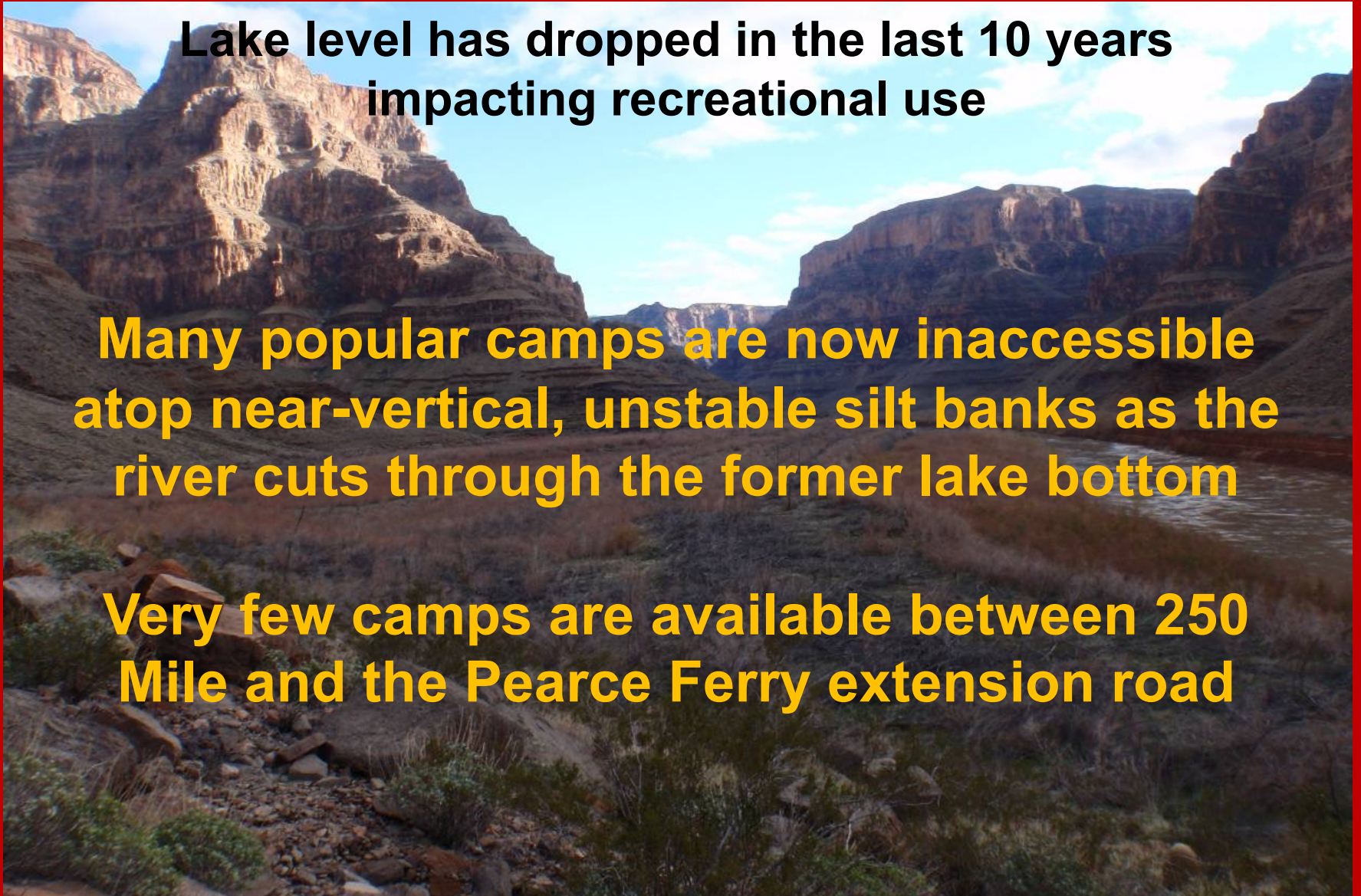
Geomorphic assessment & monitoring needs identified

# Conditions in the Lower Gorge

**Lake level has dropped in the last 10 years  
impacting recreational use**

**Many popular camps are now inaccessible  
atop near-vertical, unstable silt banks as the  
river cuts through the former lake bottom**

**Very few camps are available between 250  
Mile and the Pearce Ferry extension road**



# Travertine Falls Camp

**Issue:  
Resource  
damage and  
hazardous  
conditions  
resulting from  
improper cutting  
and trimming in  
camp.**



The volunteer crew received training in proper pruning techniques and put their new skills into practice removing hazardous stobs and restoring the camp to a more natural appearance



# 250 Mile Camp - Issue: Overgrown !!



Post work GTS April 2009



Same staircase, Feb 2010



# Post-work February 2011

Staircase realigned toward open kitchen area, leaving native vegetation intact



# Dry Canyon 264.5





**Good shade, nice level benches, only needed some pruning and improved access trails**

**Middle bench pre work was level, but narrow. A few hours with a rake and shovel, and this became a very accommodating kitchen or tent pad area.**



**Upper bench at 264.6 transformed into tent pads with some judicious pruning and earthwork**







# Dry Canyon 264.6



**Person Hours:140**

Pruned 91 linear meters of trail (kitchen, intra camp connectors, toilet)

Pruned 140 linear meters around tent pads

Delineated and expanded 5 tent pads (166 square meters)

Constructed one 13 step log and stone access trail (14 square meters)

## 273.5 Mile

Resource damage from boaters cutting and breaking vegetation adjacent to trails and camp areas



76 person hours  
~ 500 m pruning



# Grand Canyon

U.S. Department of the Interior  
National Park Service

Grand Canyon National Park



## Colorado River Resource Stewardship

### *Cooperative Resource Conservation Program*

- Nov 10: CRMP Campsite and Trails Rehabilitation

*Thank You, AZRA!!*

- Nov 11: CRMP Campsite and Trails  
*??? River and backpacking guides*



# Backcountry Management Plan

- **Human waste carryout**
- **Canyoneering and packrafting**
- **Carrying capacity**
- **Permit system and commercial use**
- **Public scoping will start soon**

*Thank You!*

Vanya Pryputniewicz  
Recreation Planner

[vanya\\_pryputniewicz@nps.gov](mailto:vanya_pryputniewicz@nps.gov)

